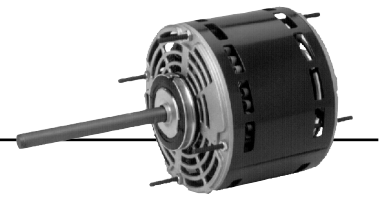


# Permanent Split Capacitor Direct Drive Fan and Blower

## 5.6" Diameter Open Air Over

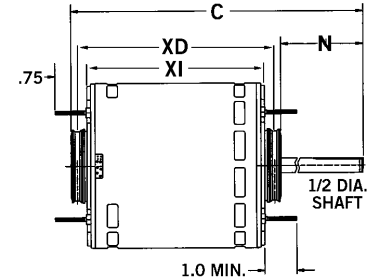


### APPLICATIONS:

Residential and commercial direct drive fans and blowers.

### FEATURES:

- Stud Extensions On Popular Models
- Suitable for Use With 370V Capacitors
- Class B Insulation
- 24" Leads
- Continuous Duty, Air Over
- SAB Bearings Have All Angle Thrust System
- Reversible Rotation
- For Flex Mount, Order Catalog #44; See Page 188-189.
- Automatic Reset Thermal Overload Protector
- Connection and Capacitor Information Furnished In Nameplate Data
- 2.5" Diameter Hub Rings Included
- **Discount Symbol: DS-3HAC**



### Hub Ring Mount (2.5") Except As Noted, Without Capacitor

HP	RPM/ Spds.	Voltage	Catalog Number	List	Cap. MFD	Amps	Shaft N	Base XD	Shell XI	Total C	Ship Wt. (lbs)	Notes	OEM
1/4	1075/3	115	1863	\$112	7.5	3.5	5.0	4.9	4.3	10.4	12		
	1625/3	115	1690	\$214	10.0	2.7	6.0	4.7	4.3	10.4	13		
	1075/3	208-230	1971	\$114	7.5	1.5	5.0	4.9	4.3	10.4	11		
	1075/3	277	600	\$236	4.0	2.0	5.0	5.1	4.6	10.7	14	69	
1/3	1075/3	115	1864	\$115	7.5	5.0	5.0	5.1	4.6	10.7	12		
	1625/3	115	1692	\$220	15.0	3.7	5.0	5.1	4.6	10.7	13		
	1075/3	208-230	1972	\$118	7.5	1.9	5.0	4.9	4.6	10.7	13		
	1075/3	277	601	\$218	4.0	2.2	5.0	5.2	4.3	10.7	14	69	
	1625/3	208-230	1693	\$150	5.0	2.1	5.0	5.1	4.7	10.4	13		
1/3 / 1/9	825/2	208-230	5469	\$218	7.5	2.4	4.5	--	5.3	9.8	17	72	
1/2	825/2	208-230	8064	\$249	20.0	4.4	2.5	5.6	6.1	9.0	21	69	LE
	1075/3	115	1865	\$139	10.0	6.5	4.0	6.0	5.4	10.4	19		
	1625/3	115	1694	\$235	15.0	5.5	5.0	5.9	5.3	11.4	17	A	
	1075/3	208-230	1973	\$144	10.0	2.9	5.0	5.9	5.3	11.4	19		
	1075/3	277	602	\$299	6.0	3.4	5.0	5.5	4.9	10.9	16	69	
	1625/3	208-230	1695	\$240	7.5	3.1-3.0	5.0	5.9	5.3	11.4	17		
1/2 - 1/6	1075/2	115	5460	\$148	12.5/7	7.3	5.0	5.4	4.8	9.8	15	72	
	1075/2	208-230	5461	\$151	10/5	3.6	5.0	5.4	4.8	9.8	15	72	
3/4	1625/3	115	1696	\$250	15.0	8.6	5.0	6.1	5.6	11.7	20		
	1625/3	208-230	1697	\$255	10.0	4.4-4.2	5.0	6.1	5.6	11.7	18	A	
	1075/3	115	8904	\$159	15.0	9.5	4.0	6.0	5.4	10.4	19	69	
	1075/3	208-230	8905	\$160	15.0	4.0	4.0	6.0	5.4	10.4	19	69	
	1075/3	277	5847	\$298	15.0	4.1	4.9	6.7	5.6	13.2	19		
	1075/4	115	3340	\$340	7.5	12.1	6.0	4.8	5.3	12.4	18		CA
3/4 - 1/5	1075/2	115	5470	\$177	20/10	8.1	5.0	6.6	6.1	11.6	22	72	
	1075/2	208-230	5471	\$181	20/10	4.1	5.0	6.6	6.1	11.6	21	72	
1	1075/4	115	6452	\$221	15.0	11.2	5.0	--	5.8	10.8	18	69,H11	
	1075/3	115	8906	\$298	20.0	12.1	5.0	6.6	6.1	12.2	20	H17	
	1075/3	208-230	8907	\$301	20.0	5.6	5.0	6.6	6.1	12.2	21	H17	
	1625/3	115	1699	\$265	25.0	11.1	6.0	6.4	5.9	12.9	21	H7	

CA = Carrier<sup>®</sup> LE = Lennox<sup>®</sup>

Note 69 No Stud Extension  
 Note 72 Includes 4 Holes In Shell For Rheem<sup>®</sup> Mount  
 Note A Class A Insulation

Note H7 36" Leads, 2.25" Diameter Hubs With 2.5" Diameter Kit Included  
 Note H11 Band Mount  
 Note H17 Class B Insulation, Studs Shaft Side Only, Ball Bearings

† All marks shown within this document are properties of their respective owners.

