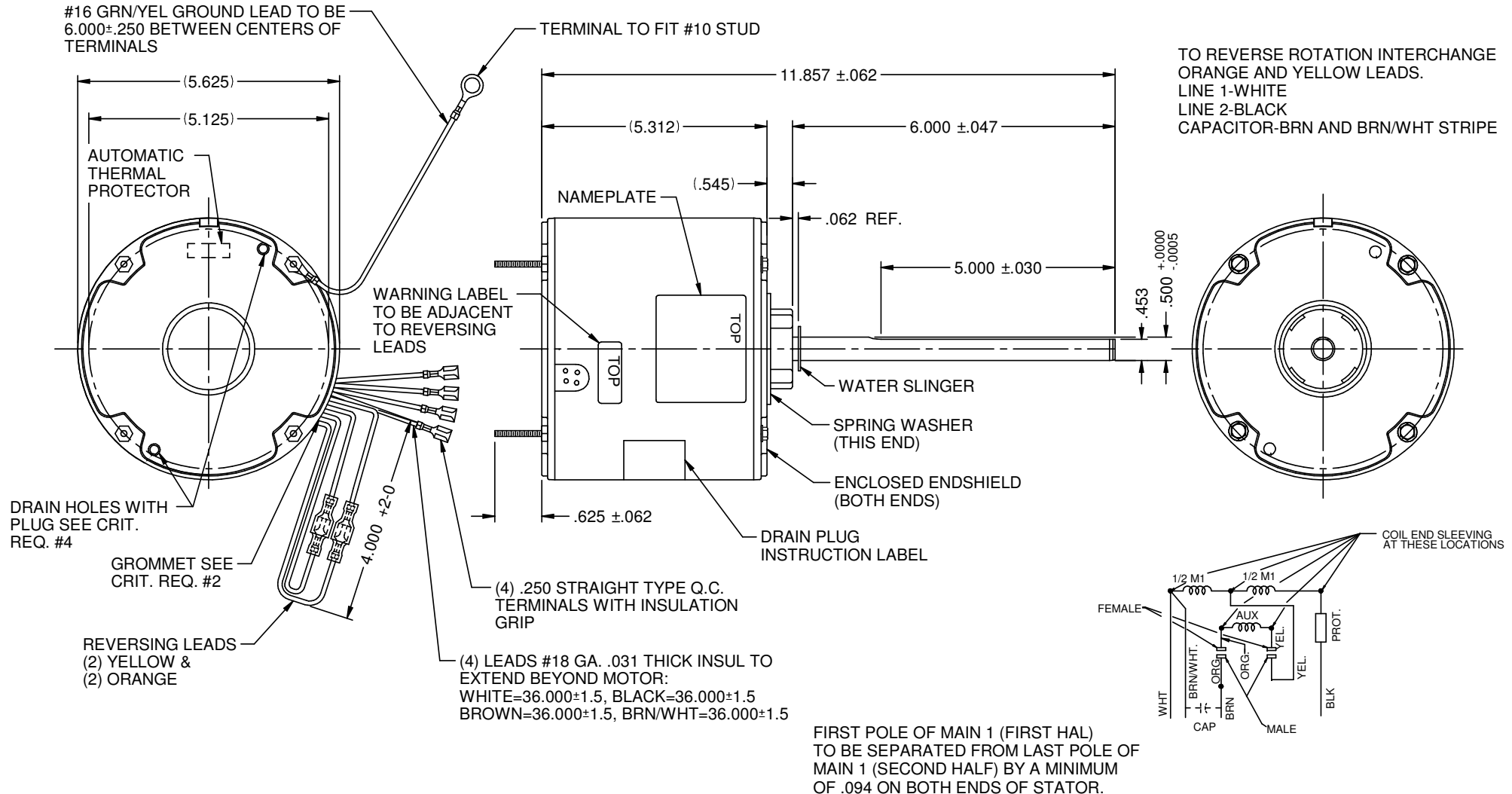


MODEL	REF	CUSTOMER	HP	VOLTS	AMPS	HZ	RPM	ROTATION	CUST. PT. NO.	DESCRIPTION / REMARKS
K55HXTDN-8453	A101061	STANDARD	1/3	460	1.3	60	1075	C.CW LEAD END REV.	3737	K55 BALL BRG. ENCLOSED



NIDEC MOTOR CORPORATION 30-Jan-19

REFER TO S.E.I.M. 24-1

REVISION RECORD FOR:	ECO: E32862
CREATED NEW DRAWING	
ISSUED BY:	F. GARCIA
ENGINEER APPROVED:	M. DE LEON

DIMENSIONS ARE FOR REFERENCE ONLY
UNLESS TOLERANCE IS SPECIFIED

NIDEC MOTOR CORPORATION			
INFORMATION DISCLOSED ON THIS DOCUMENT IS CONSIDERED PROPRIETARY AND SHALL NOT BE REPRODUCED OR DISCLOSED WITHOUT WRITTEN CONSENT OF NIDEC MOTOR CORPORATION			
TITLE		CODE	ITEM NO.
CUSTOMER DETAIL DRAWING		V02	824987
REVISION DATE:	30-JAN-19		
REV	SHEET NUMBER	DWG SIZE	
--	1 OF 3	B	